



Grow Arctic Greenhouse

Inga Smidesang - Jean Trombert - Henrik Schmuul
- Konstantin Garagul - Lorraine Goubert



LAPIN AMK
Lapland University of Applied Sciences



Team:



Inga
Smidesang
team-leader
UIT



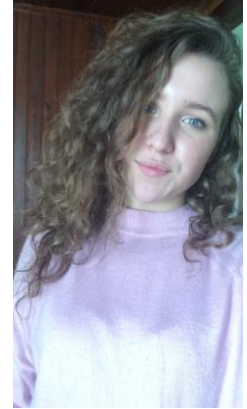
Jean
Trombert
marketing
UIT



Henrik
Schmuul
engineer
LAPIN AMK



Konstantin
Garagul
engineer
ITMO



Lorraine
Goubert
marketing
UIT

Summary:

I - Arctic Greenhouse

II - 3D Modell

III - Cost Structure

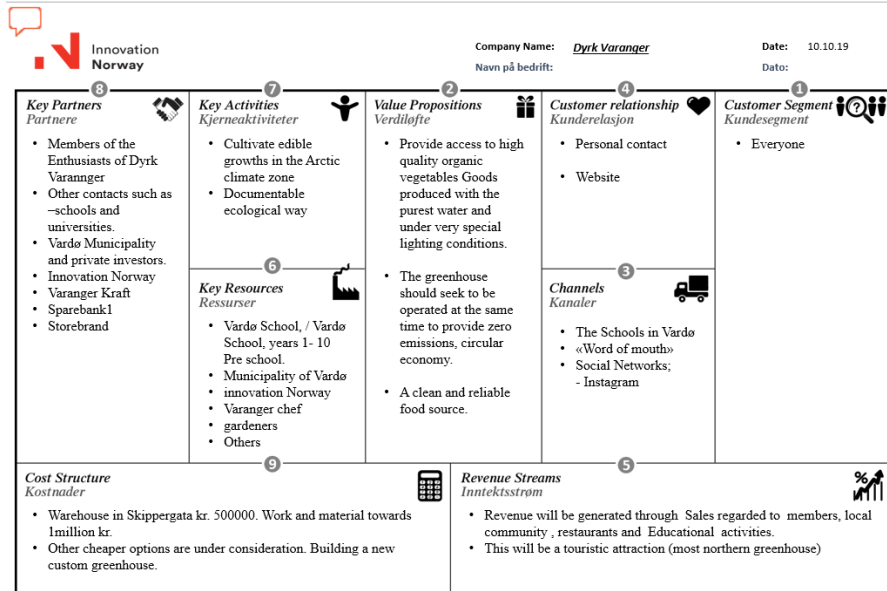
IV - Future Plans



I - Arctic Greenhouse:

- ❖ Location: Vardo
- ❖ Goal: Supply the population with a sustainable and clean food source
- ❖ *"This is an opportunity for the community of Vardo."*





Strength :

- ❖ Easy growth vegetables
- ❖ Local opportunities / community
- ❖ Less pollution

Weakness :

- ❖ The winter and polar night
- ❖ Intended length of sun exposure
- ❖ Rough winds

Opportunities :

- ❖ No restriction
- ❖ No imported vegetables
- ❖ Helpful in mental health

Threats :

- ❖ Weather

Business Model

Value for Vardø:

- Provide access to high quality organic vegetables
- Zero emissions, circular economy.

SWOT-analysis of the Build:

- Major problem is Weather and Energy supply

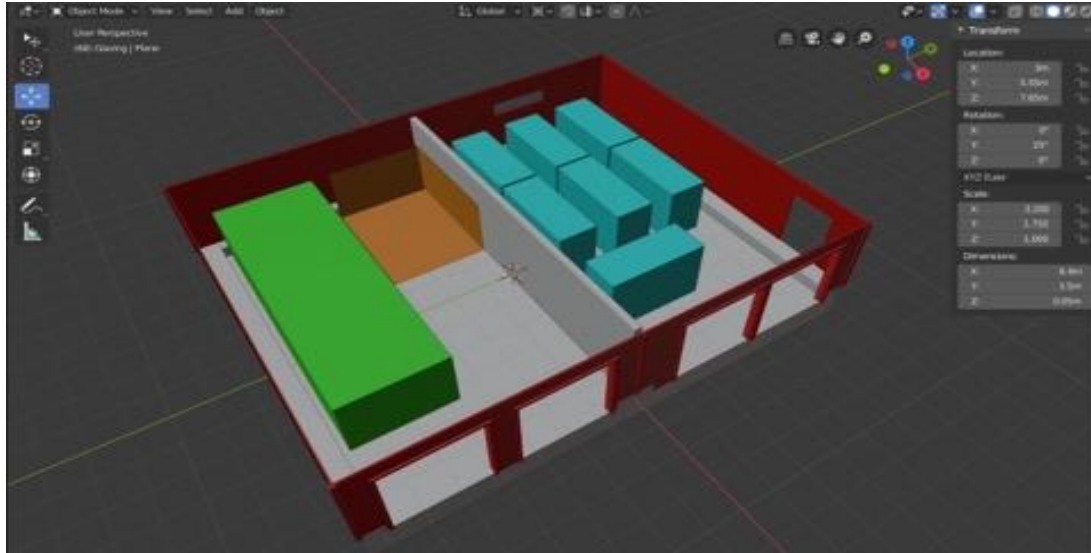
II- 3D Modell:



The Original Building



First Floor: (Agro Tech)



Strawberry farm

Size: 3.1m x 1.25m

Installation height: 2.5 to 5 meters

Number of seats: from 204 to 476 pcs.

Productivity: from 80 kg / month

Power Consumption: 1 kW



Salad and Greens farm

Size: 3.1m x 1.25m

Installation height: from 2 to 5 meters

Number of seats: from 360 to 1200 pcs.

Productivity: from 65 kg / month

Power Consumption: 1 kW

Second Floor: A Traditional Build



III- Cost Structure:

Greenhouse Materials

Soil : 1,890 kr (40ltr)
Fertilizer : 295 kr (40ltr)
Timber : between 68.9 and 459 kr
Metal : Between 89.24 and 333.03 kr
Fiberglass : €1 and €2 per m²

Greenhouse Agro tech

Seeds: Per vegetables pack;
25kr-85kr

- Agro-Tech Installations;

Total project cost:

50 sq m = 70

000 €

100 sq m = 133

000 €

200 sq m = 266

000 €

- The House;

500,000 NOK

IV- Future Plans:

- Tourism
- Solar-Domes



Strength :

- ❖ Unique (does not exist in the arctic, except for Svalbard)
- ❖ Local growth
- ❖ Sustainable and ecological step

Weakness :

- ❖ Almost none, considering Vardø allredy is a visited place, there is no weakness in adding something extra

Opportunities :

- ❖ No restriction
- ❖ Hurtigruta
- ❖ Helpful in mental health (for both visitors and inhabitants)

Threats :

- ❖ Weather
- ❖ Low market, less availability (tourism)

- Cultural events and activities

Thank You!